

**HELI**  
LIFTING THE FUTURE

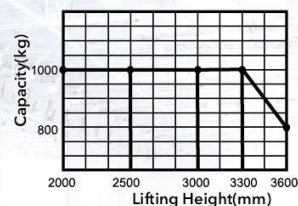
**24 YEARS** TOP1 FORKLIFT MANUFACTURER AND SALER  
IN CHINA FOR CONSECUTIVE 24 YEARS

# CDD10-060

## 1.0 Ton Electric Stacker

Lifting Height: 2000-3600mm

### Load Curve



### Advantages

- Mechanical Steering-Economic, comfortable, more reliable.
- AC Driving System-Low noise, quiet, without carbon brush and free maintenance.
- Electric Lifting-Rapid, efficient, electricity limit switch is Standard.
- Short Wheelbase-Small turning radius, suitable for narrow space.
- Energy conservation-Save energy, every day only 5kWh.
- AC Controller-Stepless, strong power, multiple automatic protection.
- Intelligent Control-Regenerative braking, automatic energy recovery.

**Fork over**

**AC drive**

**Electric height limiter**

**Integrated fork, more stronger**

Type	Lift height (mm)	Mast type	Outside width between forks (mm)	Inside width between forks (mm)
CDD10-060	2000/2500/3000/3300/3600	Standard 2-STAGE	550/600/650/685	180/230/280/315

# HELI CDD10-060

Feature		
Model		CDD10
Configuration No.		060
Type		Narrow legs
Mast type		Standard 2-Stage
Load capacity	kg	1000
Load center	mm	600
Wheel base	mm	1285
Operating type		Walkie
Wheels		
Wheels type		PU
Wheel quantity Driving wheel/Balance wheel/Bearing wheel		1/1/4
Dimension		
Standard lift height	mm	2000/2500/3000/3300/3600
Lowered fork height	mm	90
Fork size(length/width/thickness)	mm	1150(1220)/185/55
Overall length	mm	1898
Overall width	mm	806
Max.extend height	mm	2385/2885/3385/3685/3985
Mast lowered height	mm	1550/1800/2050/2200/2350
Min.Turning radius	mm	1475
Min.Aisle width for pallets 800×1200	mm	2045
Min.Aisle width for pallets 1000×1200	mm	2084
Min.ground clearance	mm	30
Performance		
Travel speed,laden/unladen	km/h	3.5/4
Lift speed,laden/unladen	mm/s	130/230
Lowering speed,laden/unladen	mm/s	130/230
Gradeability,laden/unladen	%	5/7
Electrical configuration		
Drive motor/Lift motor	kW	AC0.95/DC2.0
Battery voltage	V	24
Battery capacity	Ah	210
Brake		Electromagnetic/Regenerative
Controller		CURTIS
Weight		
Battery weight	kg	202
Service weight with battery	kg	1010

\* Details of specifications and equipment are based on information available at time of printing and may change without notice.



### ANHUI HELI INDUSTRIAL VEHICLE IMP. AND EXP. CO., LTD.

ADD: 668 FANGXING ROAD, HEFEI, ANHUI, CHINA  
TEL: +8655163639068  
FAX: +8655163639966  
Email: heli@helichina.net  
WEBSITE: WWW.HELICHINA.COM / WWW.HELICHINA.NET

© 2015 heli copyright

Catalog No.2015.04 HELI Print